



Terra Inspectioneering



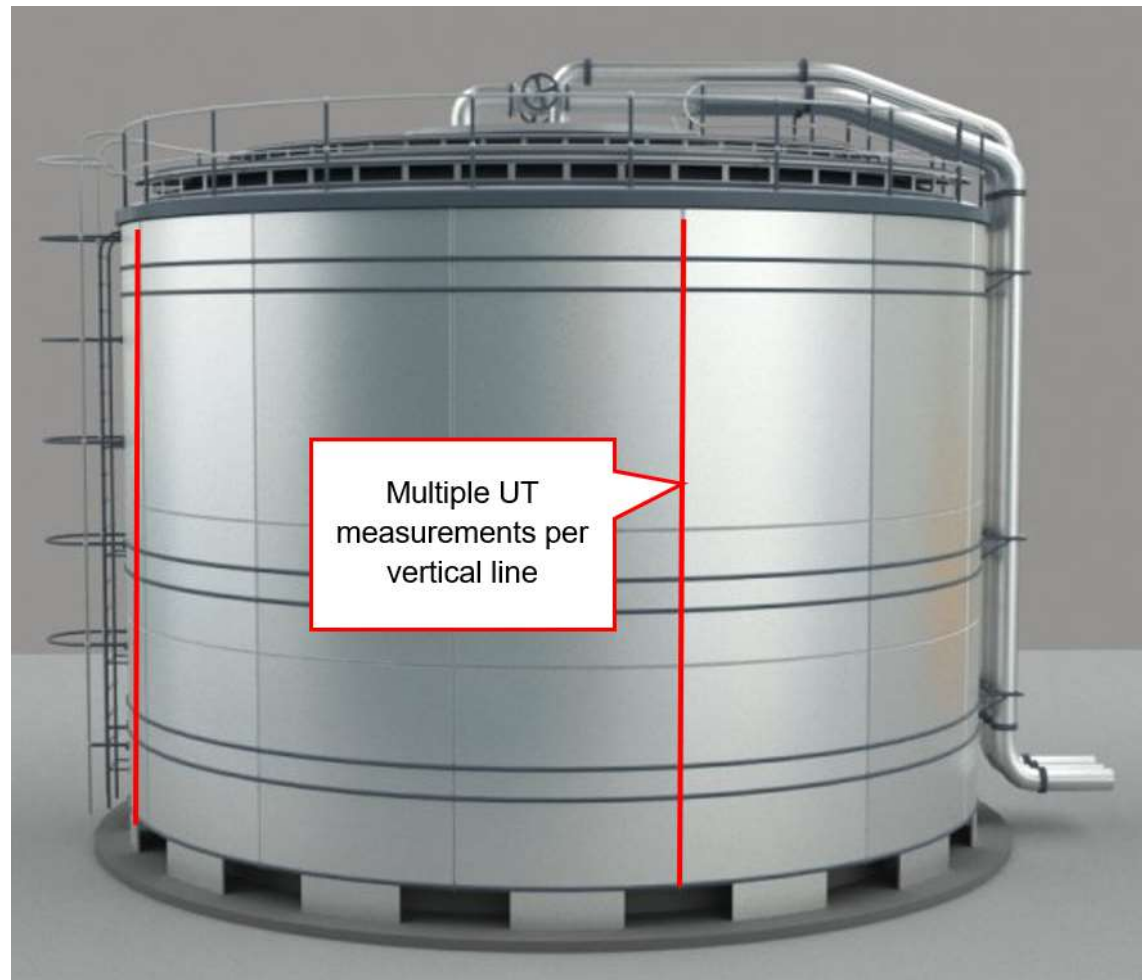
Introductrion



KiK|MPI
Kennis- en innovatiecentrum
Maintenance Procesindustrie

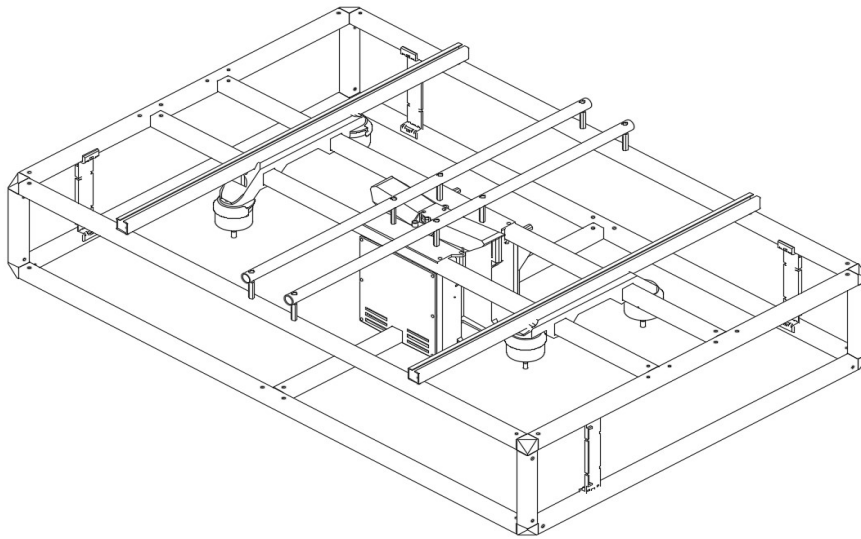
Interreg 
Vlaanderen-Nederland
Europees Fonds voor Regionale Ontwikkeling

Use case: storage tanks



<https://vimeo.com/254860035#t=25s>

Result 2020: RoNik UT drone



Highlights:

- Collision tolerant
- Modular
- Proven technology
(~ 1000 flights executed in 2019)
- Outdoor
- Non-entry
- Cloud-enabled

Current modules:

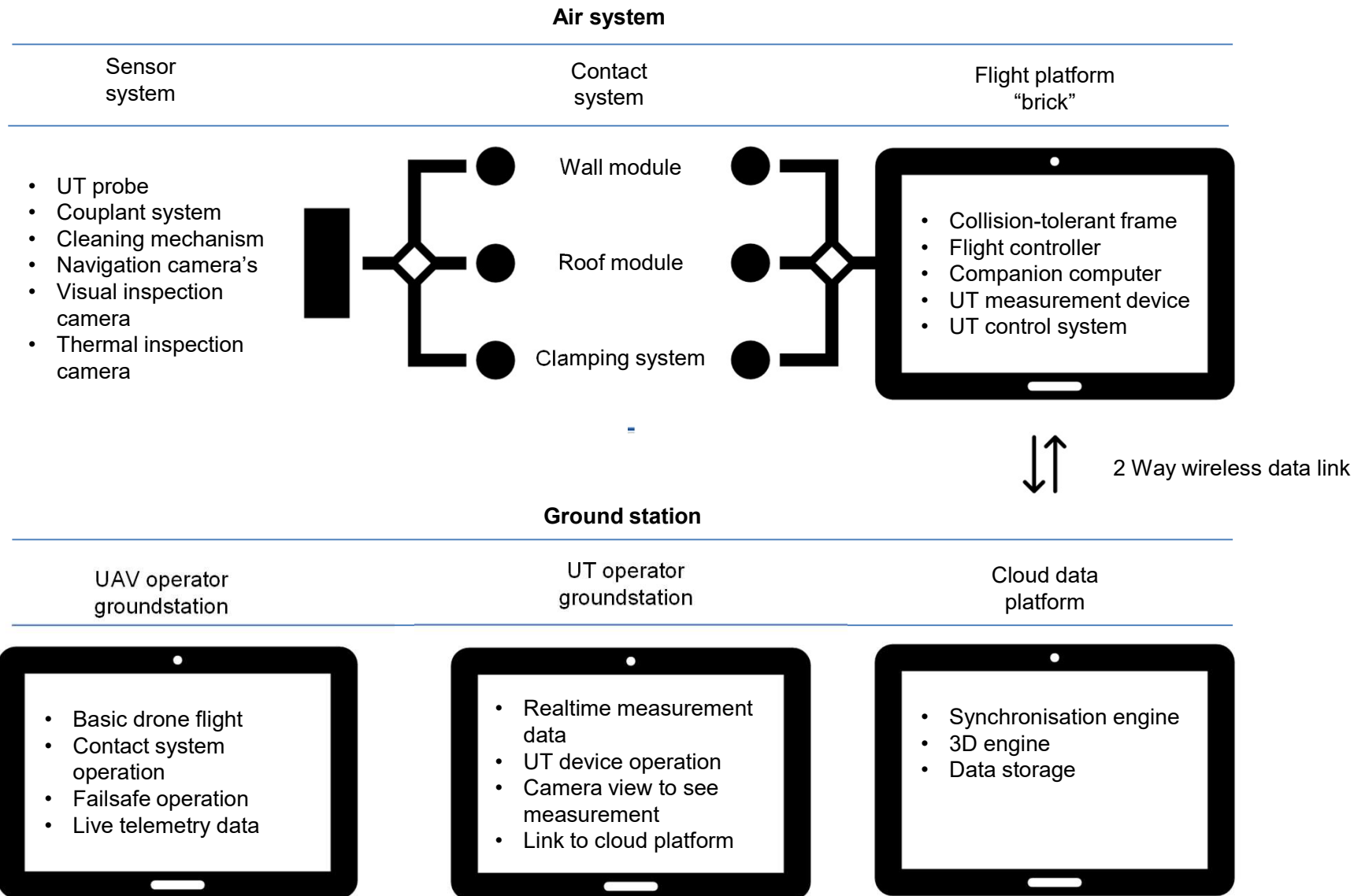
- Vertical walls
- Roof plates
- Diagonal walls
- IPE\C\U beams
- Floors
- Non-spark
cleaning brush



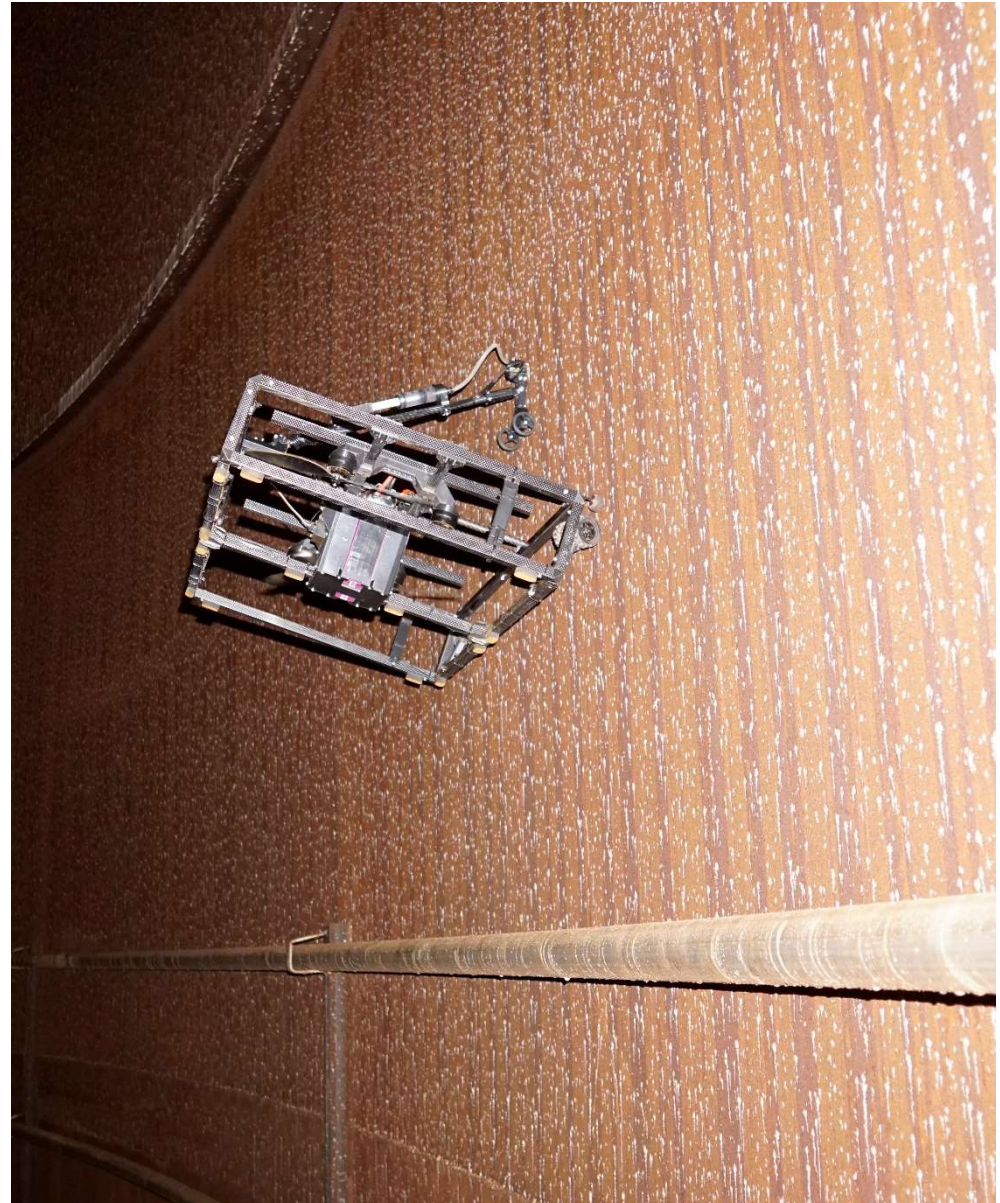
RoNik UT drone

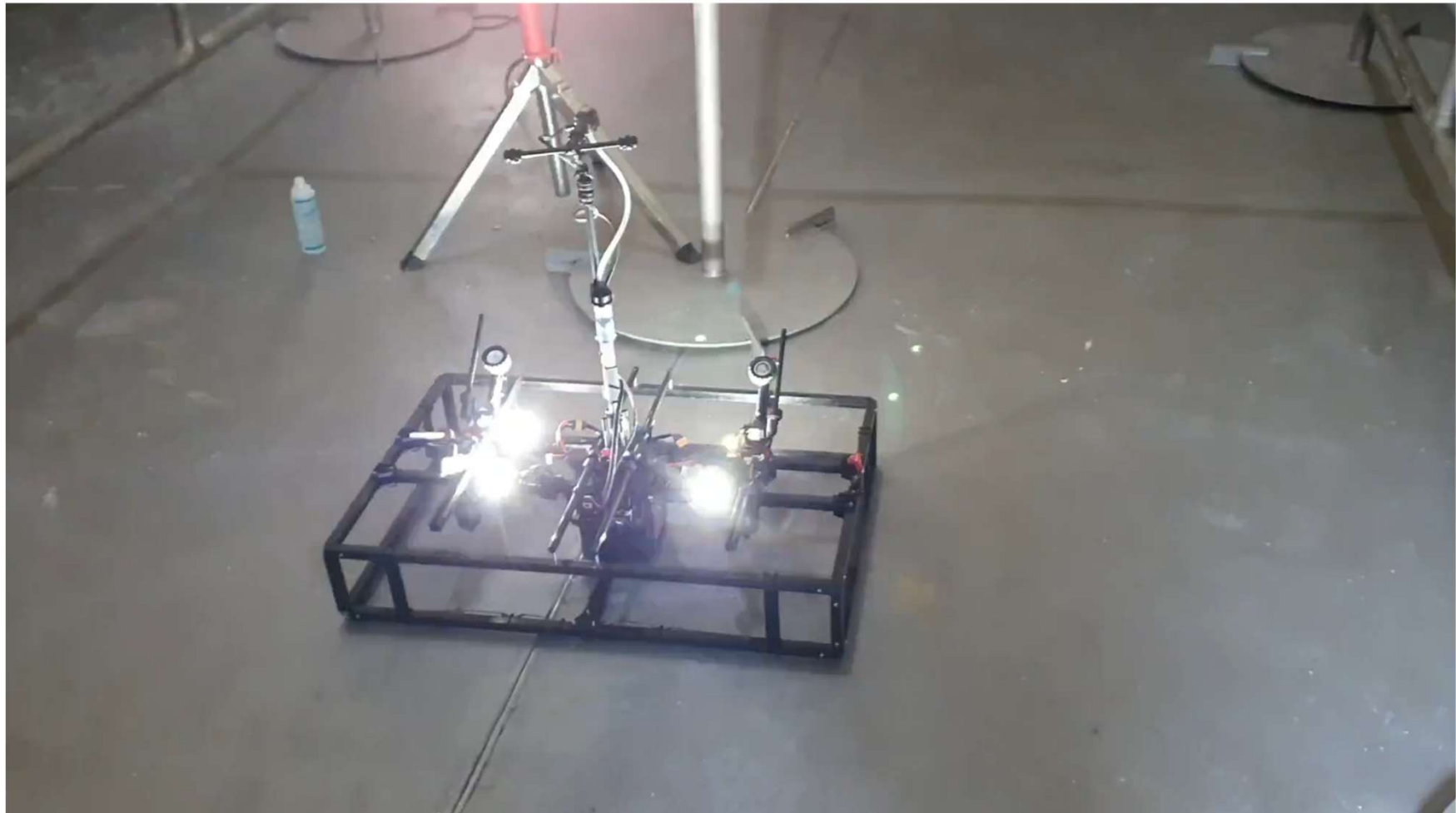


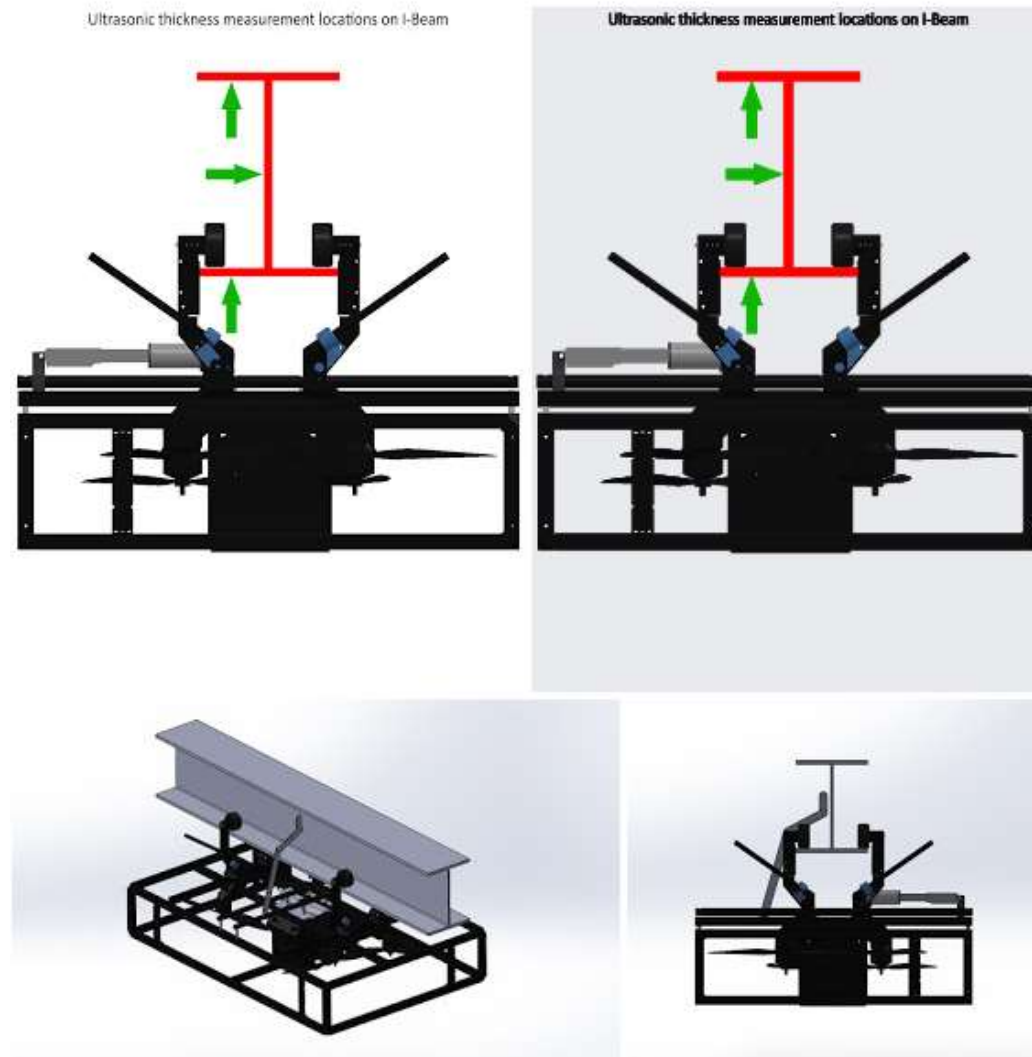
<https://a360.co/30nKo0m>



Modular: walls

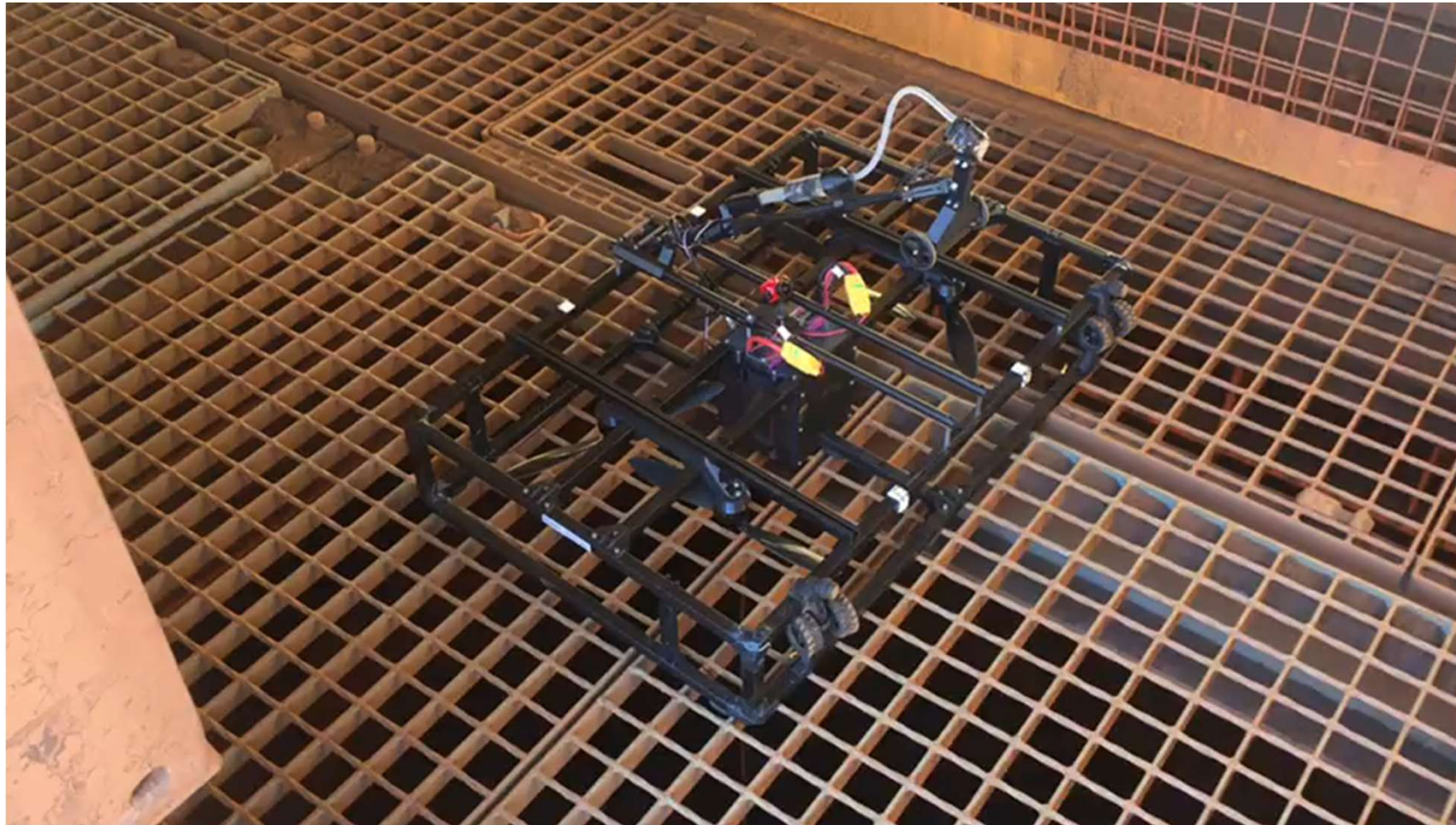






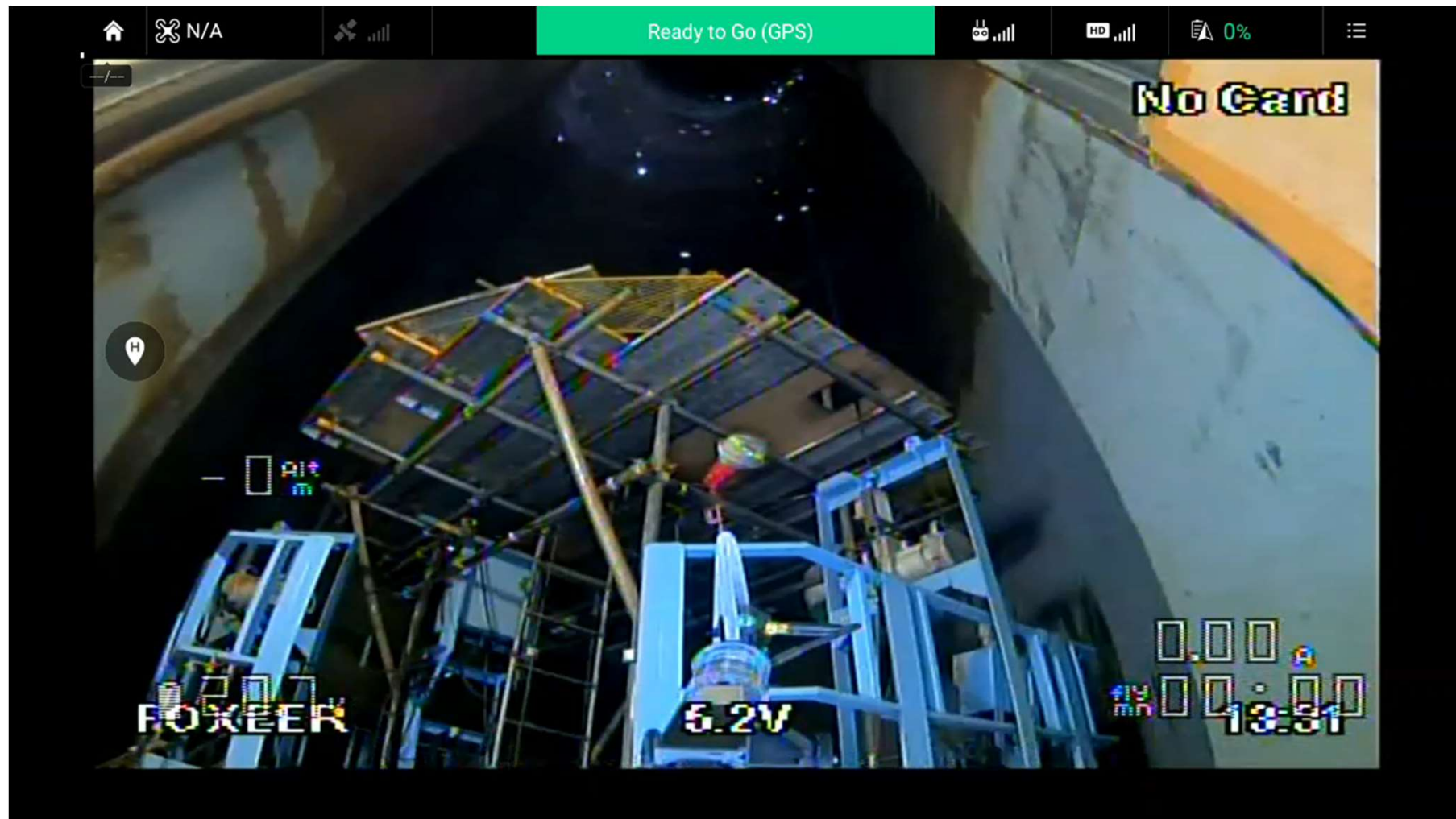


<https://a360.co/30rfiFu>





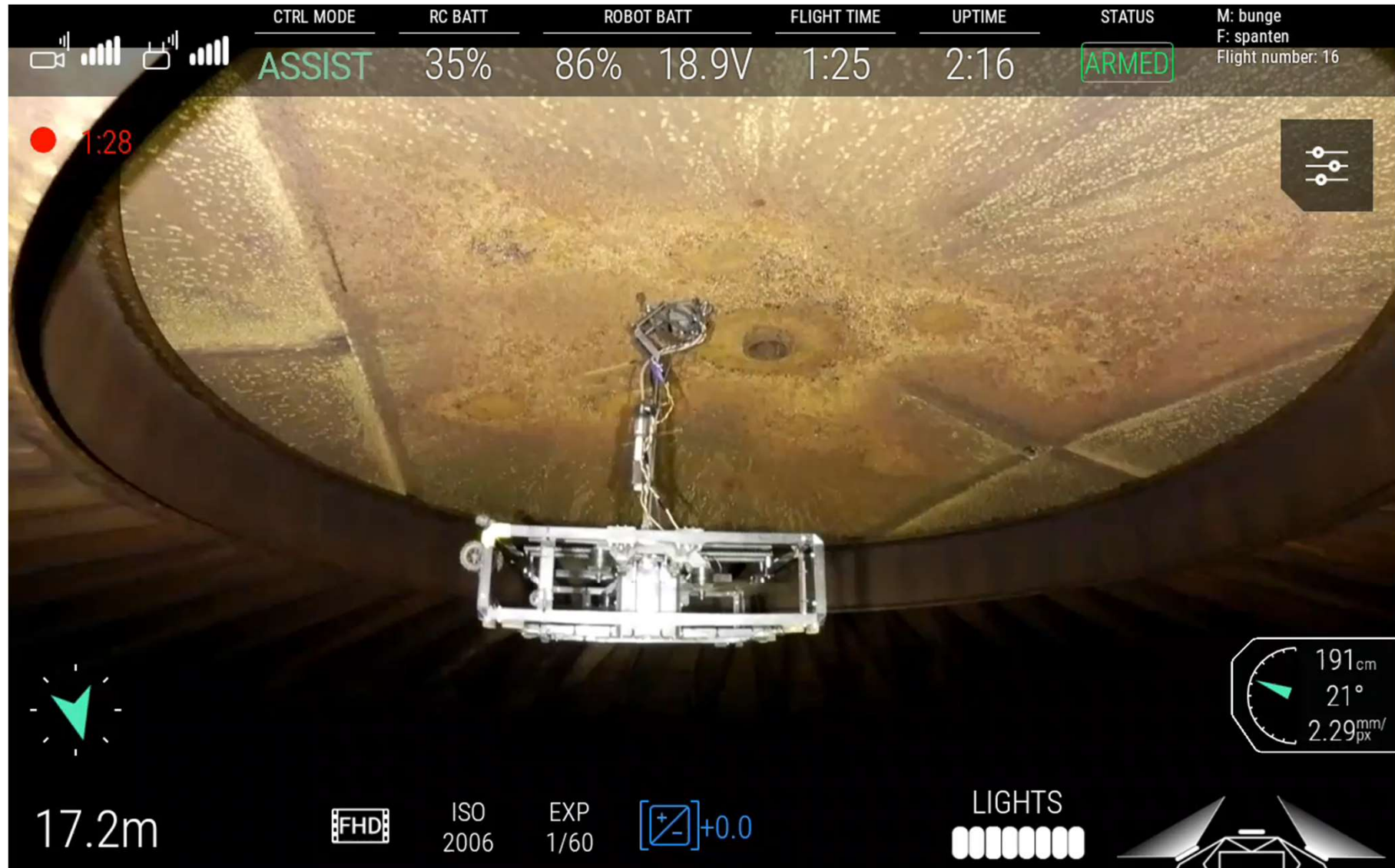
<https://photos.app.goo.gl/JuXrSDCEZ7WyAT67A>







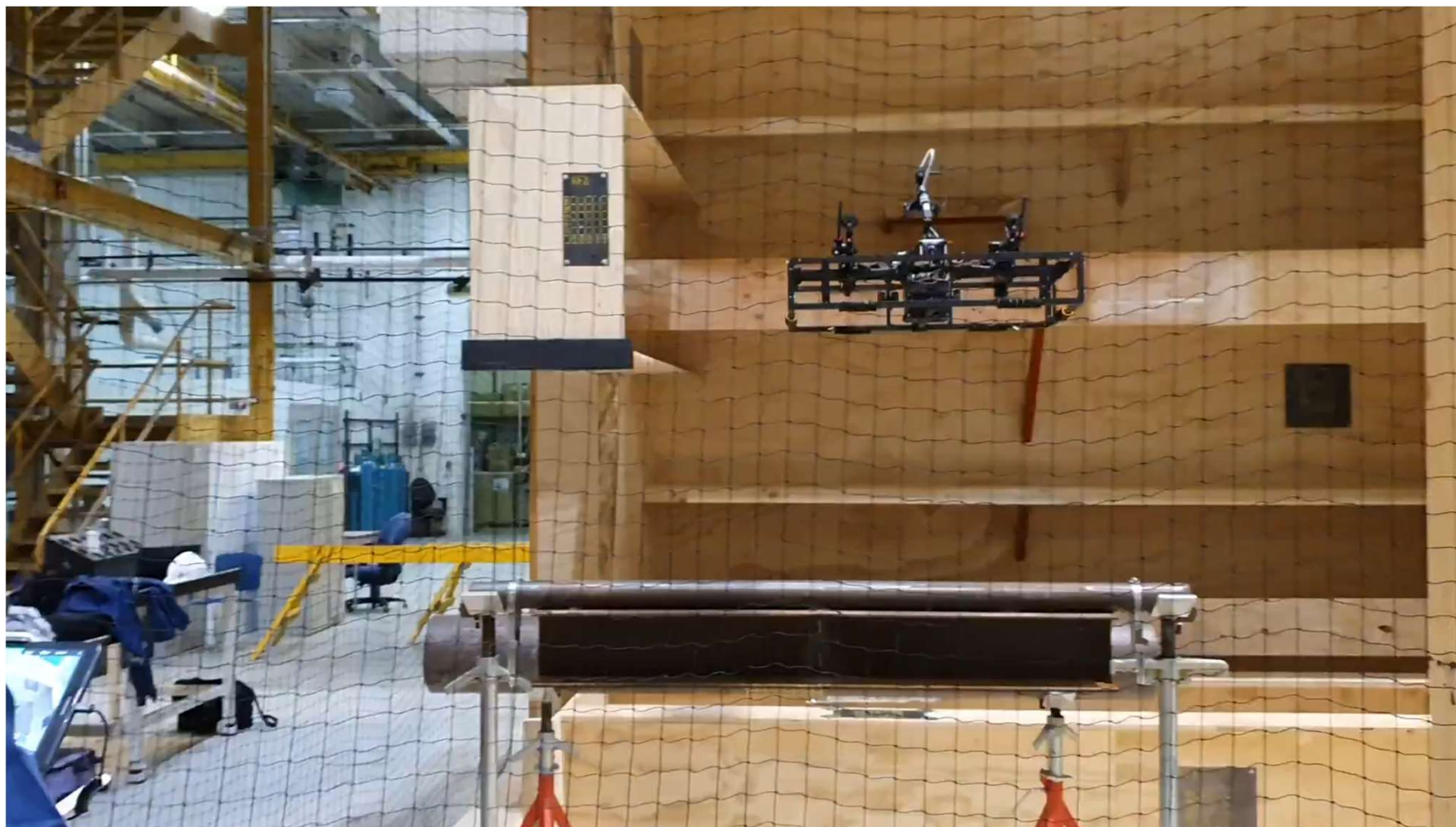
Cleaning



Modular: downward pointing sensor



<https://a360.co/30rfiFu>





- Improve non-entry support for confined spaces.
- RTK GPS \ Lidar support for outdoor use.
- Robotic arm to reach more complex structures.
- Clamping\gripping mechanism for more complex structures (e.g. U-, Z- or L-beams, pipes, etc)
- X8 design (8 motors) for more redundancy.
- Support for other NDT techniques, e.g. PEC Scanners (based on eddy current, to measure through isolation).
- Autonomous navigation.
- Waypoint planning to measurements can be repeated at exactly the same spots.
- AI\machine learning service provider integration.

